

Features

- Performance class and grade:
 Single: AW-PG90-ATD
 Pairs: AW-PG45/65-ATD
- Inswing or outswing
- 2-1/4" deep door rails and stiles
- Mitered door and frame corners
- Heavy duty internal corner clips
- 1" x 4" door frame
- 0.125 nominal wall thickness, door and frame
- Three way adjustable butt hinges
- Polyamide thermal break
- Double row of weather seals
- Stainless steel multipoint latch lock / deadbolt with swinghooks and shootbolts as required
- Solid brass lever handle selection in multiple finishes
- Removable tubular interlocking glazing beads
- Accommodates 1/4", 5/16", 3/8", 1/2", 9/16", 5/8", 3/4", 13/16", 1" and 1-1/16" infills
- Dry glazed method
- Factory glazed shipped with door hung in frame
- Kawneer standard finishes
- Two color option
- Integral astragal on pairs

Optional Features

- Concealed stainless steel doorstop
- LCN 1260 surface applied closer

Product Applications

- The Series 2000T Terrace Door is a high performance French door for use in condominiums, lofts, hotels and apartments
- The Series 2000T Terrace Door Frame is intended to be installed in "punched" openings or as a liner frame within other Kawneer framing or curtain wall systems
- When sidelites and/or transoms are required the 2000T door frame is installed as a liner frame within other Kawneer framing or curtain wall systems

For specific product applications,
Consult your Kawneer representative.

Laws and building and safety codes governing the design and use of glazed entrance, window, and curtain wall products vary widely. Kawneer does not control the selection of product configurations, operating hardware, or glazing materials, and assumes no responsibility therefor.

Kawneer reserves the right to change configuration without prior notice when deemed necessary for product improvement.

© Kawneer Company, Inc., 2011

OUTSWING DOOR DETAILS 5

INSWING DOOR DETAILS 6

SIDELITES AND TRANSOM 7

STANDARD GLAZING OPTIONS 8

HARDWARE.....9, 10

STRUCTURAL LIMITATIONS..... 11

THERMAL CHARTS 12-15

Laws and building and safety codes governing the design and use of glazed entrance, window, and curtain wall products vary widely. Kawneer does not control the selection of product configurations, operating hardware, or glazing materials, and assumes no responsibility therefor.

Kawneer reserves the right to change configuration without prior notice when deemed necessary for product improvement.
© Kawneer Company, Inc., 2011

LAWS AND BUILDING AND SAFETY CODES GOVERNING THE DESIGN AND USE OF GLAZED ENTRANCE, WINDOW, AND CURTAIN WALL PRODUCTS VARY WIDELY. KAWNEER DOES NOT CONTROL THE SELECTION OF PRODUCT CONFIGURATIONS, OPERATING HARDWARE, OR GLAZING MATERIALS, AND ASSUMES NO RESPONSIBILITY THEREFOR.

Metric (SI) conversion figures are included throughout these details for reference. Numbers in parentheses () are millimeters unless otherwise noted.

The following metric (SI) units are found in these details:

- m – meter
- cm – centimeter
- mm – millimeter
- s – second
- Pa – pascal
- MPa – megapascal

Kawneer reserves the right to change configurations without prior notice when deemed necessary for product improvement.

Laws and building and safety codes governing the design and use of glazed entrance, window, and curtain wall products vary widely. Kawneer does not control the selection of product configurations, operating hardware, or glazing materials, and assumes no responsibility therefor.

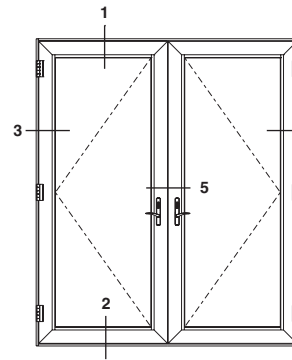
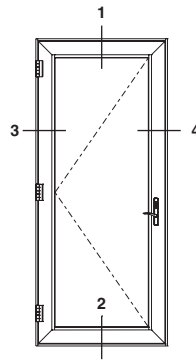
Kawneer reserves the right to change configuration without prior notice when deemed necessary for product improvement.

© Kawneer Company, Inc., 2011

SCALE 3" = 1' 0"

Single Door

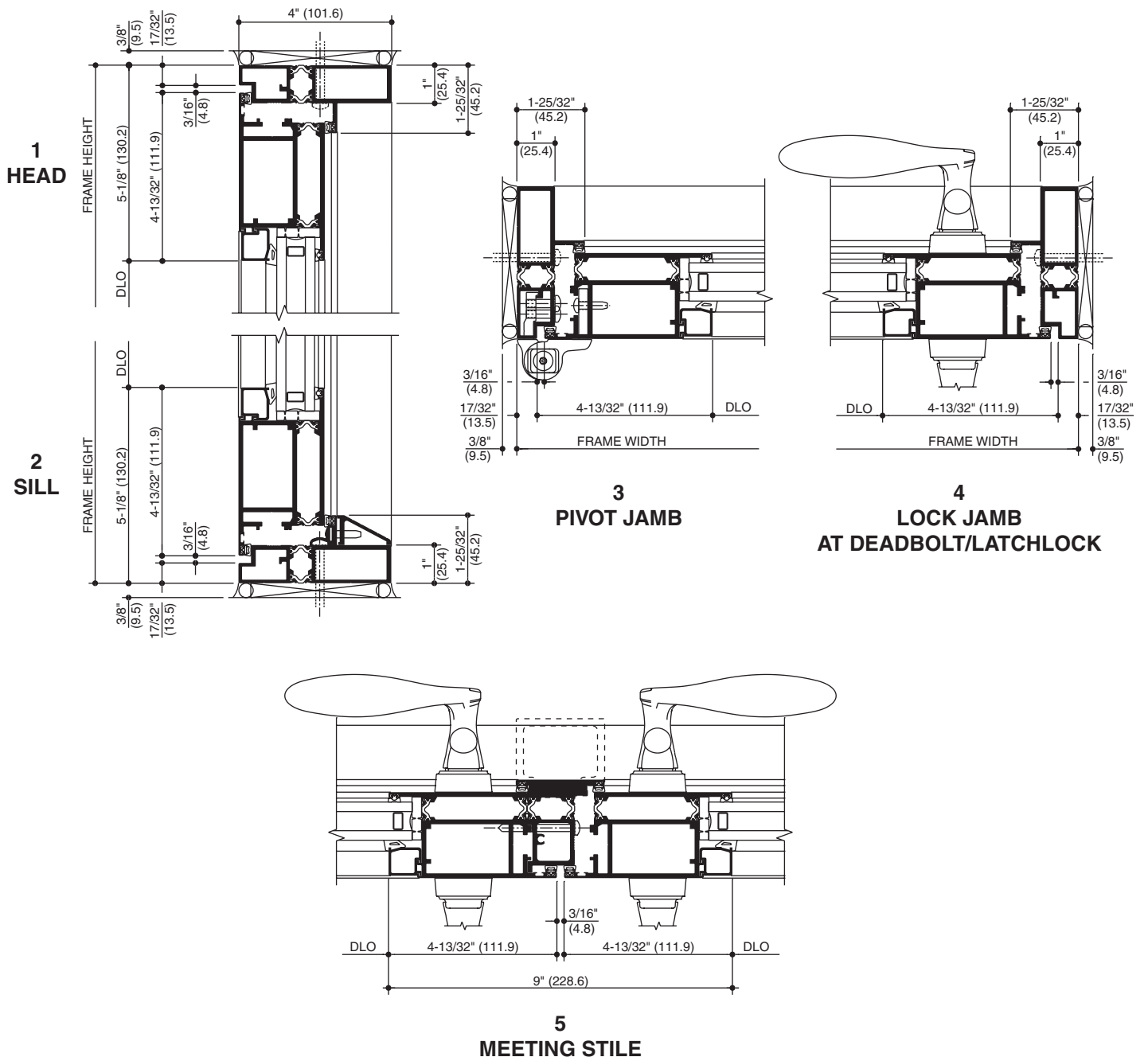
Maximum Frame Size = 48" x 96"
(1219.2 x 2438.4)
Minimum Frame Size = 30" x 73"
(762 x 1854.2)



Pair of Doors

Maximum Frame Size = 96" x 96"
(2438.4 x 2438.4)
Minimum Frame Size = 60" x 81"
(1524 x 2057.4)

OUTSWING DOORS & FRAME



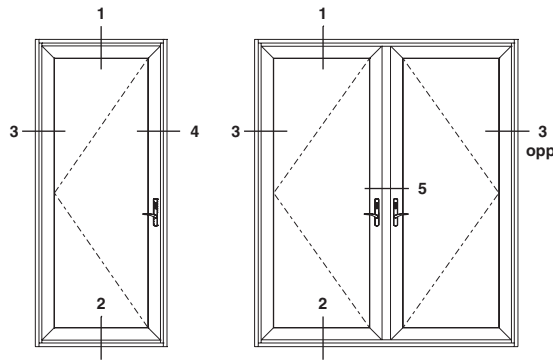
Laws and building and safety codes governing the design and use of glazed entrance, window, and curtain wall products vary widely. Kawneer does not control the selection of product configurations, operating hardware, or glazing materials, and assumes no responsibility therefor.

Kawneer reserves the right to change configuration without prior notice when deemed necessary for product improvement.
© Kawneer Company, Inc., 2011

SCALE 3" = 1' 0"

Single Door

Maximum Frame Size = 48" x 96"
(1219.2 x 2438.4)
Minimum Frame Size = 30" x 73"
(762 x 1854.2)

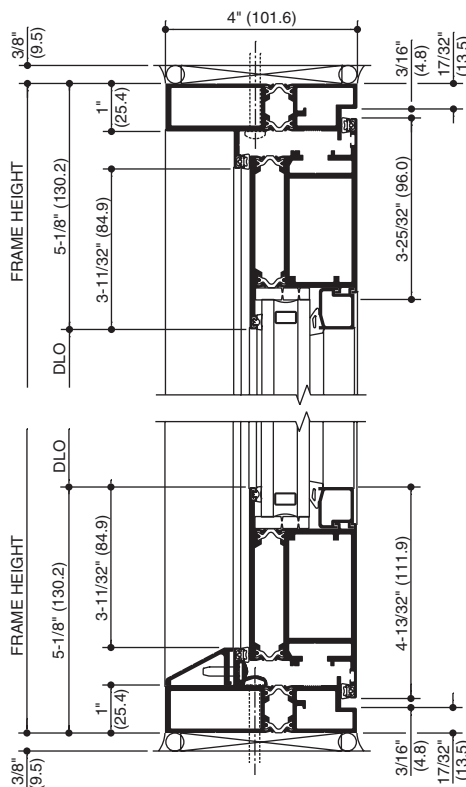


Pair of Doors

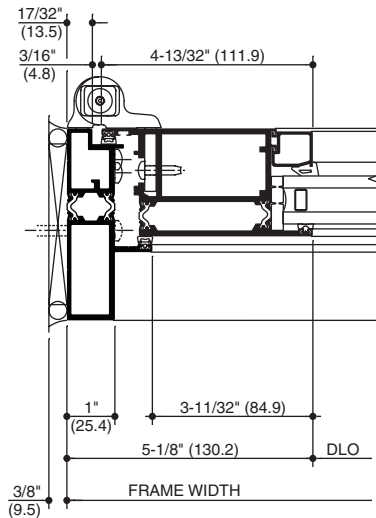
Maximum Frame Size = 96" x 96"
(2438.4 x 2438.4)
Minimum Frame Size = 60" x 81"
(1524 x 2057.4)

INSWING DOORS & FRAME

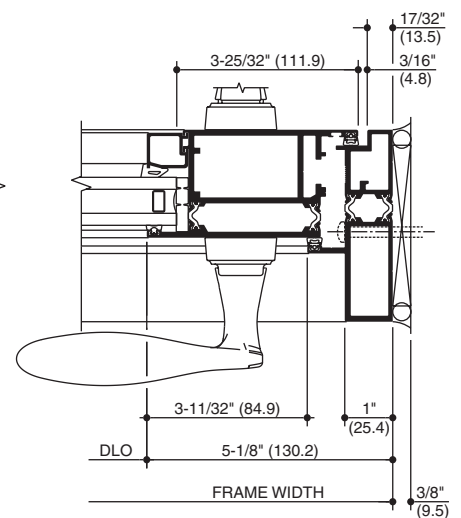
1 HEAD



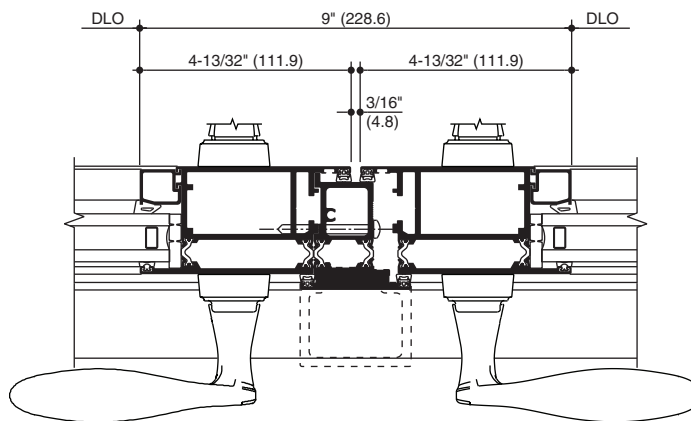
2 SILL



3 PIVOT JAMB



4 LOCK JAMB AT DEADBOLT/LATCHLOCK



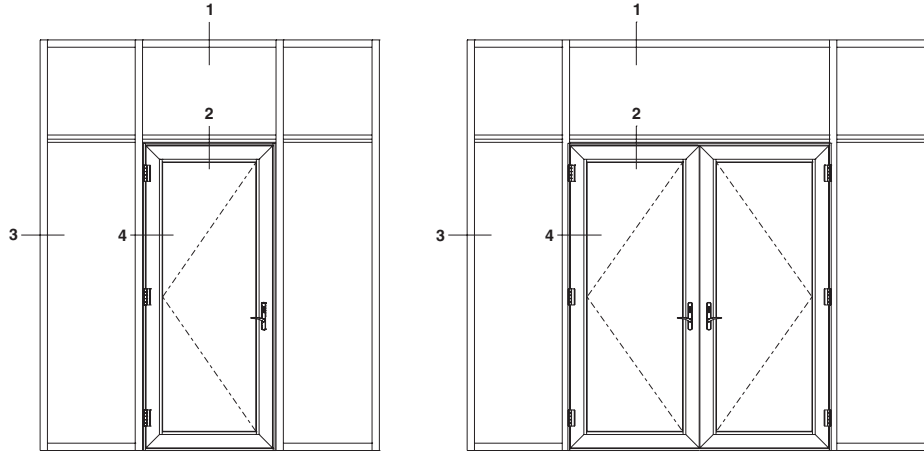
5 MEETING STILE

Laws and building and safety codes governing the design and use of glazed entrance, window, and curtain wall products vary widely. Kawneer does not control the selection of product configurations, operating hardware, or glazing materials, and assumes no responsibility therefor.

Kawneer reserves the right to change configuration without prior notice when deemed necessary for product improvement.

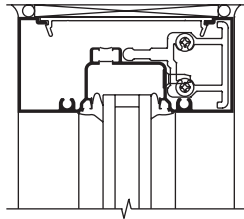
© Kawneer Company, Inc., 2011

SCALE 3" = 1' 0"

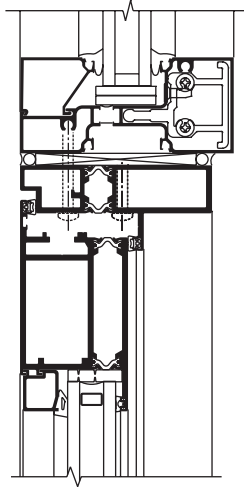


OUTSWING DOORS & FRAME
TRIFAB 451T FRAME SHOWN

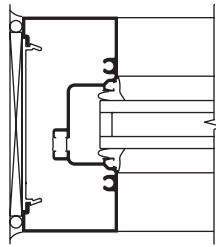
1
TRANSOM HEAD



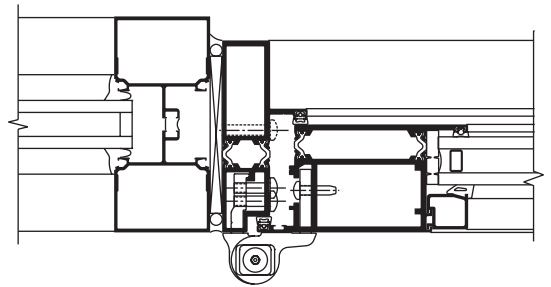
2
TRANSOM BAR



3
SIDELITE JAMB



4
DOOR JAMB

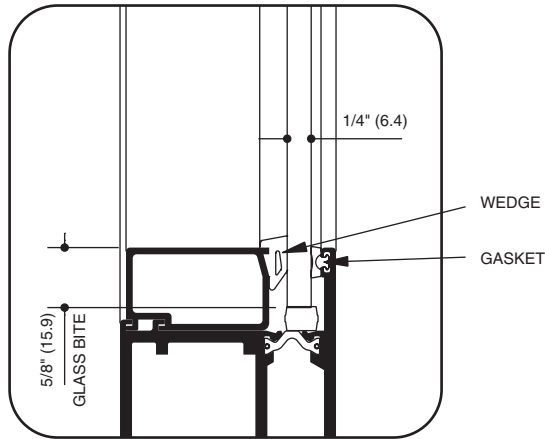


Laws and building and safety codes governing the design and use of glazed entrance, window, and curtain wall products vary widely. Kawneer does not control the selection of product configurations, operating hardware, or glazing materials, and assumes no responsibility therefor.

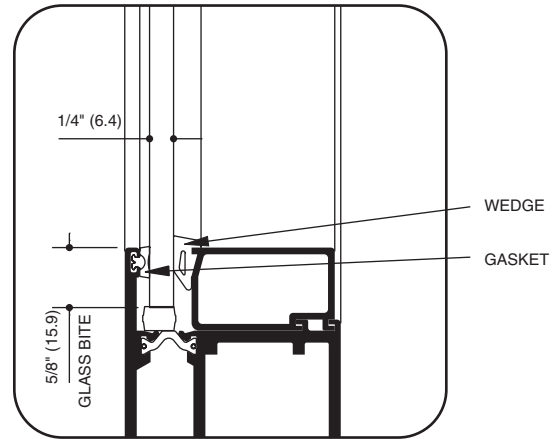
Kawneer reserves the right to change configuration without prior notice when deemed necessary for product improvement.

© Kawneer Company, Inc., 2011

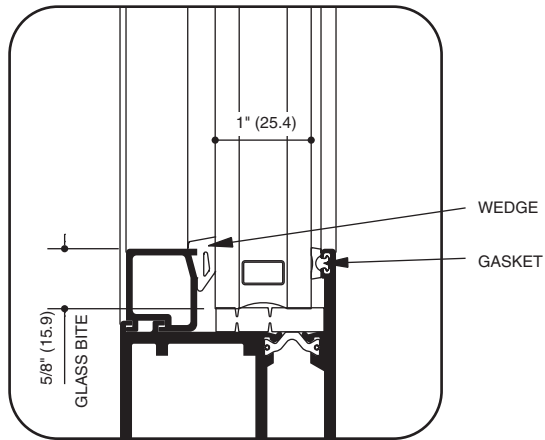
SCALE 3" = 1' 0"



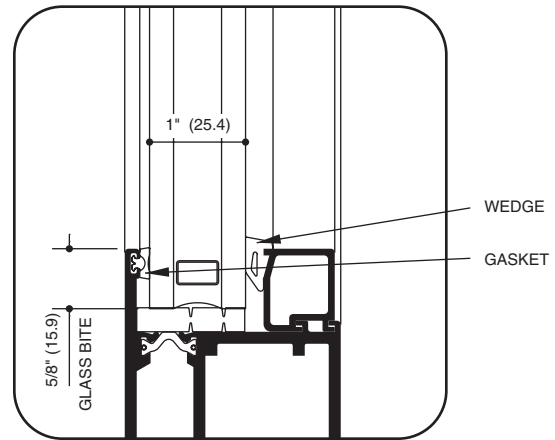
**1/4" INFILL
OUTSWING DOOR**



**1/4" INFILL
INSWING DOOR**



**1" INFILL
OUTSWING DOOR**



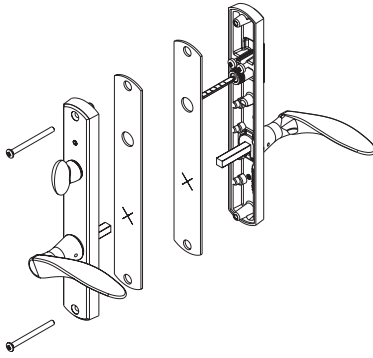
**1" INFILL
INSWING DOOR**

Laws and building and safety codes governing the design and use of glazed entrance, window, and curtain wall products vary widely. Kawneer does not control the selection of product configurations, operating hardware, or glazing materials, and assumes no responsibility therefor.

Kawneer reserves the right to change configuration without prior notice when deemed necessary for product improvement.

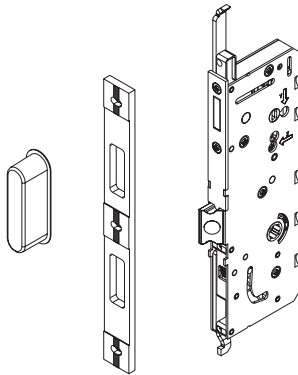
© Kawneer Company, Inc., 2011

TRIM SETS



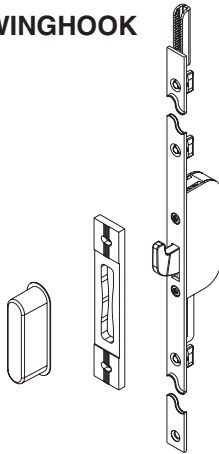
Contemporary style solid brass lever handle and escutcheon plate. Available in three finishes Polished Brass, Brushed Chrome and Rustic Umber. Includes keyed cylinder and thumbturn.

LATCHLOCK/DEADBOLT GEARBOX



Stainless steel gearbox provides both a latchlock for normal use and deadbolt for additional security. Lock strike plates are stainless steel and adjustable. Each includes an injection molded plastic dust box.

SWINGHOOK



Swinghooks provide additional locking points along the vertical edge of the door leaf. Lockstrikes are stainless steel and adjustable. Each includes an injection molded plastic dust box.

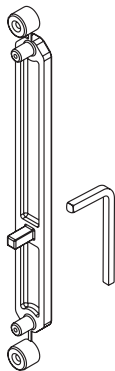
SHOOT BOLT AND SLEEVE



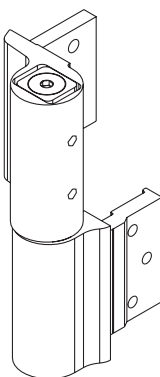
Top and bottom stainless steel shoot bolts secure the inactive leaf of pairs to the transom bar and threshold.

Laws and building and safety codes governing the design and use of glazed entrance, window, and curtain wall products vary widely. Kawneer does not control the selection of product configurations, operating hardware, or glazing materials, and assumes no responsibility therefor.

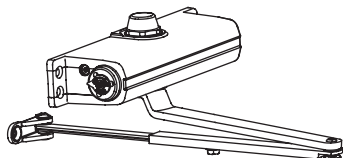
Kawneer reserves the right to change configuration without prior notice when deemed necessary for product improvement.
© Kawneer Company, Inc., 2011

CONSTRUCTION HANDLE AND BACK PLATE

Trim sets are shipped loose to avoid damage during construction. The construction handle and construction plate allow temporary operation of the locking hardware.

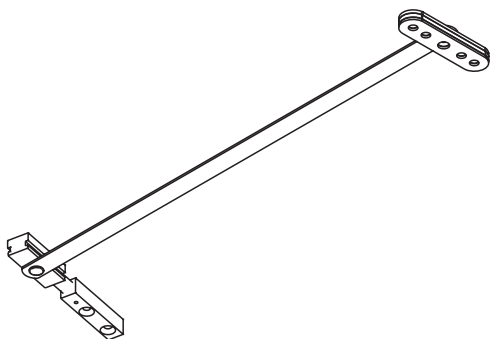
ADJUSTABLE BUTT HINGE

Aluminum 3-way adjustable hinges improve alignment between door leaf and frame. Hinges adjust in and out, up and down and left to right without removing the door leaf. Available in clear and dark bronze anodized finishes or painted to match door leaf.

SURFACE APPLIED CLOSER

Door and frame will accommodate LCN 1260 surface mounted closer and drop plate.

Note: Closer is mounted on exterior side of frame with inswing door.

DOOR STOP

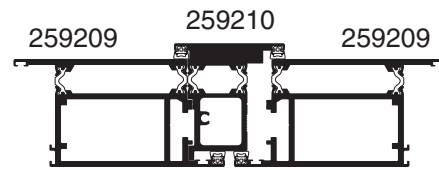
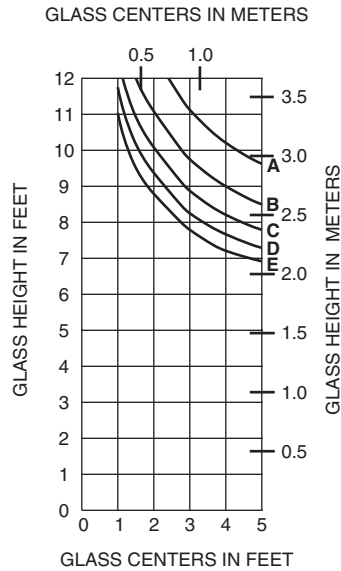
Stainless steel door stop assemblies are concealed in the top rail of the door leaf.

WINDLOAD LIMITATIONS

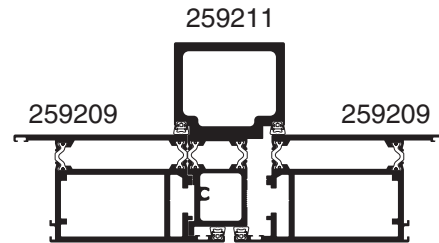
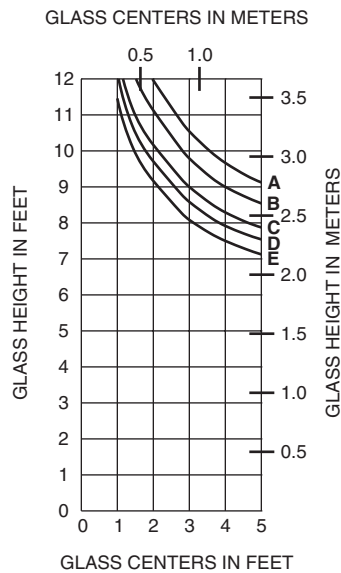
Charted windload curves are based on allowable stress for aluminum of 15,152 PSI and a L/175 deflection ratio and, in all cases represent the limiting values. Dimensional limits at the stated windloads are for door frame members anchored at the ends.

- A = 20 PSF (960)
- B = 30 PSF (1440)
- C = 40 PSF (1920)
- D = 50 PSF (2400)
- E = 60 PSF (2880)

SMALL ASTRAGAL



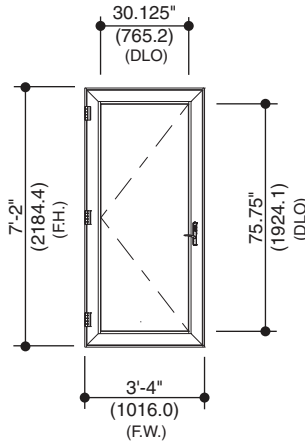
MEDIUM ASTRAGAL



Laws and building and safety codes governing the design and use of glazed entrance, window, and curtain wall products vary widely. Kawneer does not control the selection of product configurations, operating hardware, or glazing materials, and assumes no responsibility therefor.

Kawneer reserves the right to change configuration without prior notice when deemed necessary for product improvement.
© Kawneer Company, Inc., 2011

Project Specific U-Factor Example Calculation



Note: 2000T Terrace Door outswing shown for example.

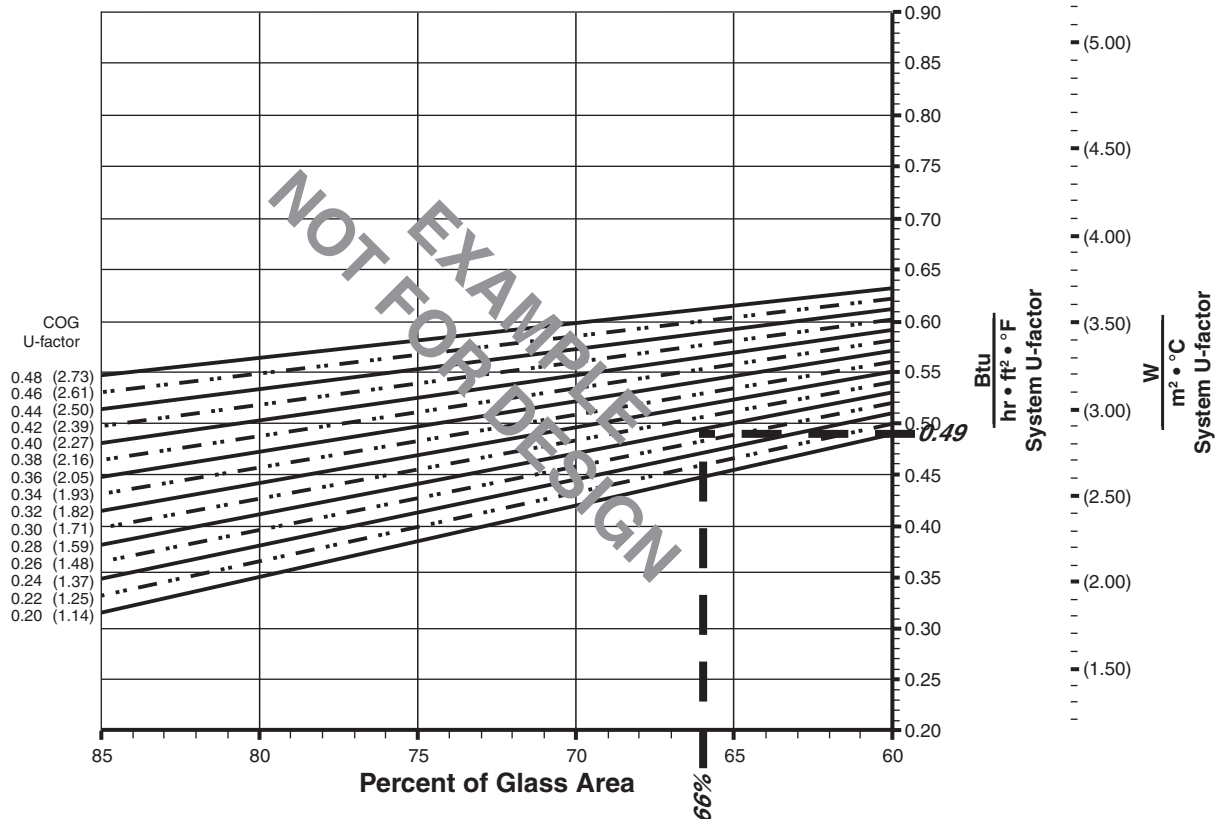
Example Glass U-Factor = 0.28 Btu/hr • ft² • °F

Total Daylight Opening = 30.125" x 75.75" = 15.85 ft²

Total Projected Area = 3'-4" x 7'-2" = 23.9 ft²

Percent of Glass = (Total Daylight Opening ÷ Total Projected Area)100
 = (15.85 ÷ 23.9)100 = 66%

System U-factor vs Percent of Glass Area



Based on 66% glass and center of glass (COG) U-factor of 0.28
 System U-factor is equal to 0.49 Btu/hr • ft² • °F

Laws and building and safety codes governing the design and use of glazed entrance, window, and curtain wall products vary widely. Kawneer does not control the selection of product configurations, operating hardware, or glazing materials, and assumes no responsibility therefor.

Kawneer reserves the right to change configuration without prior notice when deemed necessary for product improvement.
 © Kawneer Company, Inc., 2011

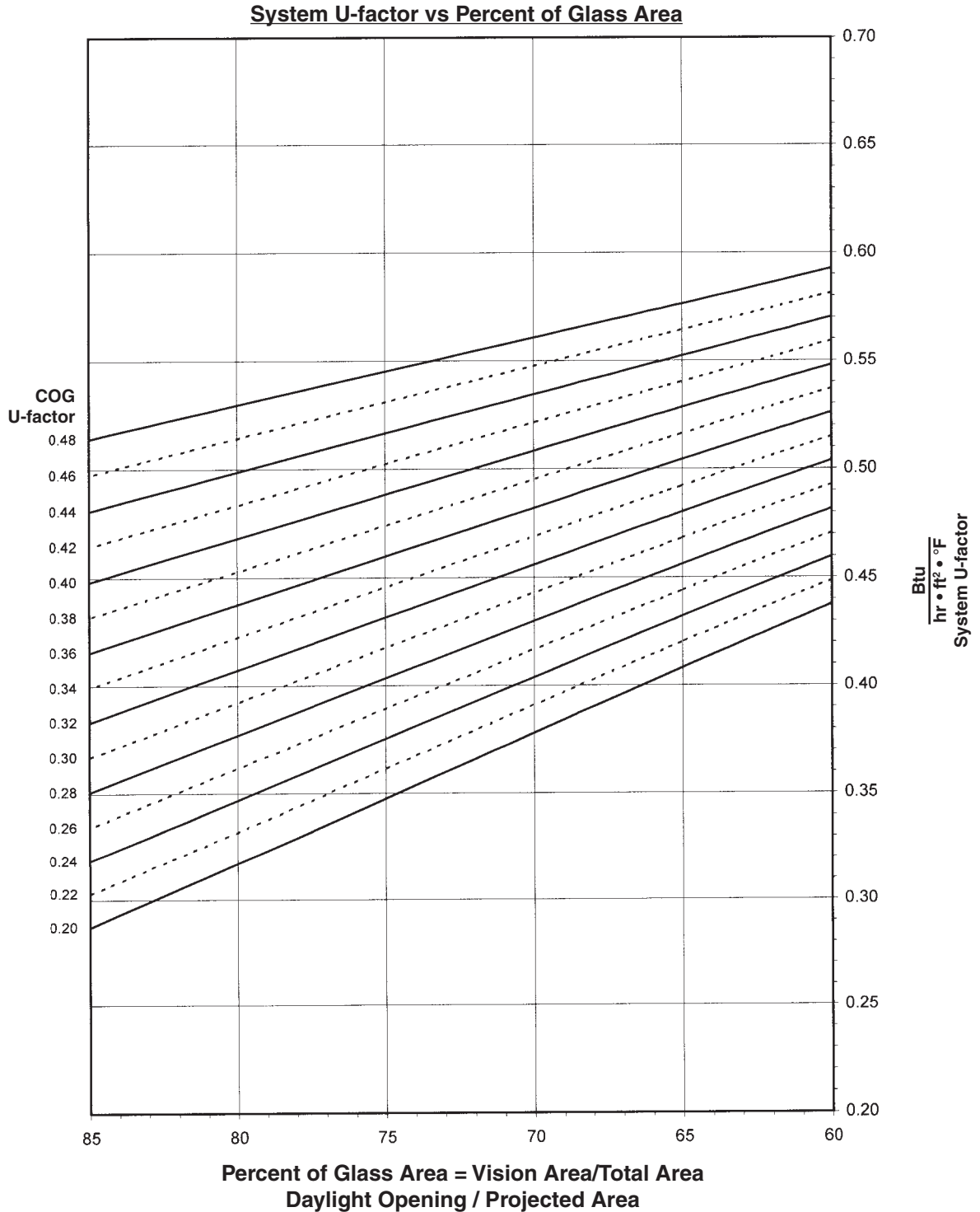
2000T TERRACE DOOR - SINGLE LEAF

Note:

Values in parentheses are metric.

COG = Center of Glass.

Charts are generated per AMMA 507



Notes for System U-factor, SHGC and VT charts:

For glass values that are not listed, linear interpolation is permitted.

Glass properties are based on center of glass values and are obtained from your glass supplier.

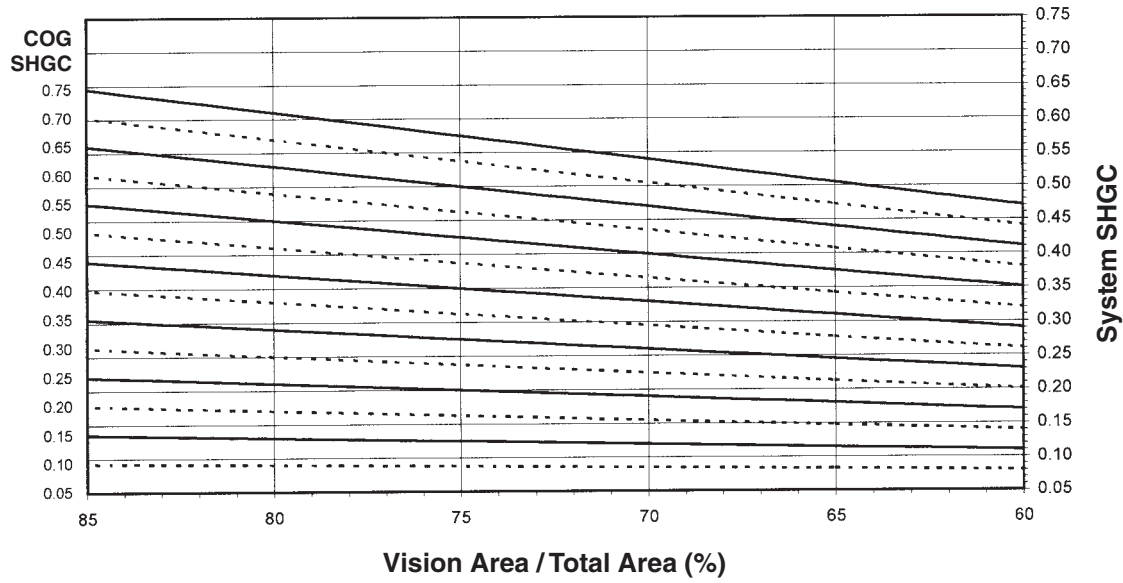
Laws and building and safety codes governing the design and use of glazed entrance, window, and curtain wall products vary widely. Kawneer does not control the selection of product configurations, operating hardware, or glazing materials, and assumes no responsibility therefor.

Kawneer reserves the right to change configuration without prior notice when deemed necessary for product improvement.

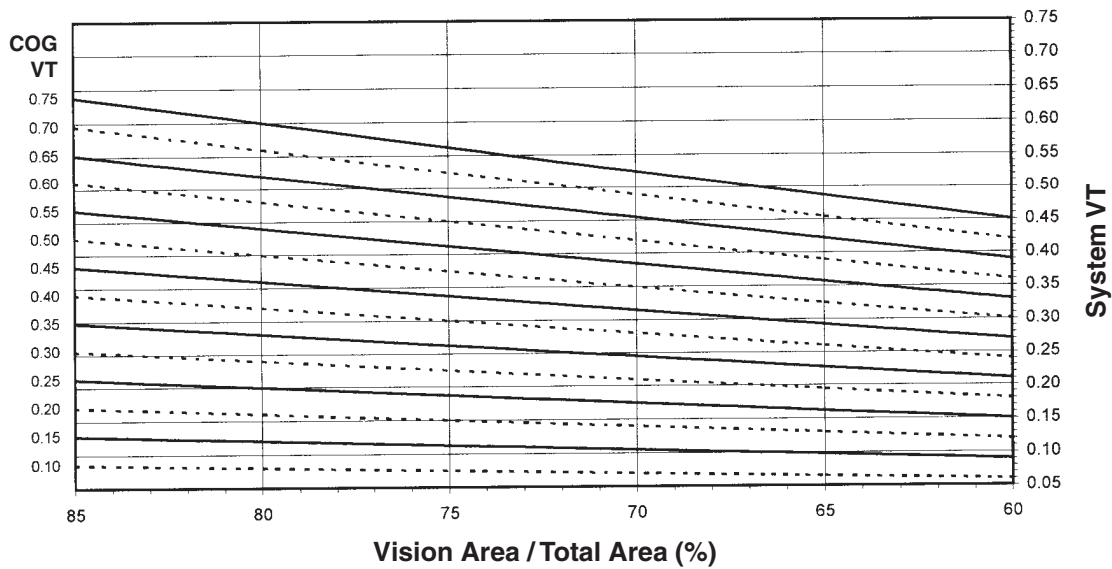
© Kawneer Company, Inc., 2011

2000T TERRACE DOOR - SINGLE LEAF

System Solar Heat Gain Coefficient (SHGC) vs Percent of Vision Area



System Visible Transmittance (VT) vs Percent of Vision Area



Laws and building and safety codes governing the design and use of glazed entrance, window, and curtain wall products vary widely. Kawneer does not control the selection of product configurations, operating hardware, or glazing materials, and assumes no responsibility therefor.

Kawneer reserves the right to change configuration without prior notice when deemed necessary for product improvement.
© Kawneer Company, Inc., 2011

2000T TERRACE DOOR - SINGLE LEAF

Thermal Transmittance¹ (BTU/hr • ft² • °F)

Glass U-Factor ³	Overall U-Factor ⁴
0.48	0.58
0.46	0.56
0.44	0.55
0.42	0.54
0.40	0.53
0.38	0.52
0.36	0.50
0.34	0.49
0.32	0.48
0.30	0.47
0.28	0.46
0.26	0.44
0.24	0.43
0.22	0.42
0.20	0.41

SHGC Matrix²

Glass SHGC ³	Overall SHGC ⁴
0.75	0.51
0.70	0.47
0.65	0.44
0.60	0.41
0.55	0.38
0.50	0.34
0.45	0.31
0.40	0.28
0.35	0.25
0.30	0.21
0.25	0.18
0.20	0.15
0.15	0.12
0.10	0.08
0.05	0.05

Visible Transmittance²

Glass VT ³	Overall VT ⁴
0.75	0.49
0.70	0.46
0.65	0.42
0.60	0.39
0.55	0.36
0.50	0.33
0.45	0.29
0.40	0.26
0.35	0.23
0.30	0.20
0.25	0.16
0.20	0.13
0.15	0.10
0.10	0.07
0.05	0.03

NOTE: For glass values that are not listed, linear interpolation is permitted.

1. U-Factors are determined in accordance with NFRC 100.
2. SHGC and VT values are determined in accordance with NFRC 200.
3. Glass properties are based on center of glass values and are obtained from your glass supplier.
4. Overall U-Factor, SHGC, and VT Matrices are based on the standard NFRC specimen size of 1000mm wide by 2000mm high (39-3/8" x 78-3/4").

Laws and building and safety codes governing the design and use of glazed entrance, window, and curtain wall products vary widely. Kawneer does not control the selection of product configurations, operating hardware, or glazing materials, and assumes no responsibility therefor.

Kawneer reserves the right to change configuration without prior notice when deemed necessary for product improvement.
© Kawneer Company, Inc., 2011

Laws and building and safety codes governing the design and use of glazed entrance, window, and curtain wall products vary widely. Kawneer does not control the selection of product configurations, operating hardware, or glazing materials, and assumes no responsibility therefor.

Kawneer reserves the right to change configuration without prior notice when deemed necessary for product improvement.

© Kawneer Company, Inc., 2011